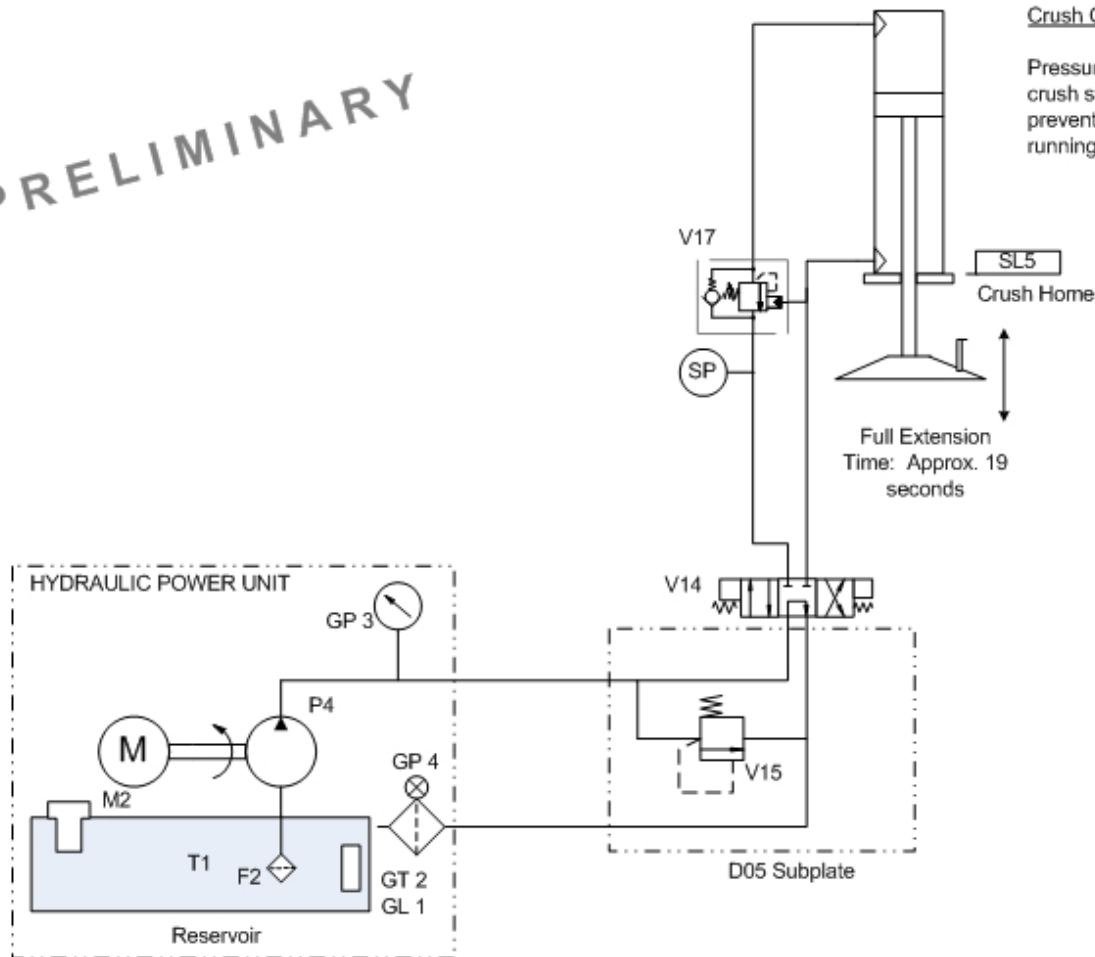


PRELIMINARY



Crush Cylinder

Pressure Switch defines bottom of crush stroke. Counterbalance valve prevents downward creep and load running from pump.

CONFIDENTIAL

Crush cycle only actuates when rinse cycles are complete as defined by the operator AND if the operator has rotated the CRUSH selector switch to "YES"

Limit Switches define positions of various components. See Controls Schematic for details.

Approximate Settings for Crush Pressure Relief Valve: 2,800 psi

Valve assemblies are mounted on top of power unit oil reservoir (T1).

	UNIT 220 VAC. Control Valve on reservoir. Rtn Filter with gauge. Counterbalance valve on Crush.	CUSTOMER	<h2>Hydraulics Schematic</h2> <h3>Drum Recycler I</h3>
	DESIGNED AND MANUFACTURED BY New Ecology Systems, LLC www.DrumRecycler.com 713/660-7986	REVISED 4/8/2005	
	FILENAME HYDRAULICS SCHEMATIC - DR I.VSD		